

5062376-011.10.fid
rynmr500d h-1, quantitative (d1=60 sec, ns=8)

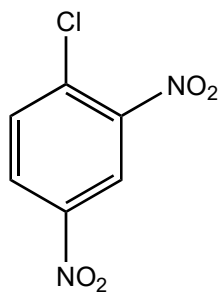
8.76
8.75
8.40
8.39
8.38
8.38
7.80
7.78

7.26

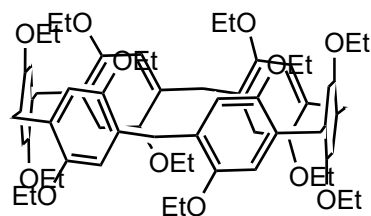
6.69

3.84
3.82
3.81
3.79
3.79

1.54
1.30
1.28
1.27



6.4mg, 0.0307mmole (97%)



1.99/12 = 0.166
= 0.0051mmole
= 5.4mg; 98.2wt%

1.01

1.00

0.99

1.99

6.14

6.21

12.0 11.5 11.0 10.5 10.0 9.5 9.0 8.5 8.0 7.5 7.0 6.5 6.0 5.5 5.0 4.5 4.0 3.5 3.0 2.5 2.0 1.5 1.0 0.5 0